

The South's Great Lake

KENTUCKY — LAKE —

Visitors Guide



800-467-7145
visitkylake.com

KENTUCKY LAKE

Seasonal Events

Spring:

- Chocolate Walk - Benton
- Coffee & Chocolate Festival - Calvert City
- Spring Crappie Run - Kentucky Lake
- Major League Fishing Tournaments - Kentucky Lake
- Cornfield Fishing Demo Days - Moors Resort
- Tater Day and Craft Fair Festival - Benton
- Kites Over Calvert - Calvert City
- Hippie Daze Festival - Aurora & Kenlake State Park

Summer:

- Memorial Day Weekend Festivities - Kentucky Lake
- 4th of July Ameribration Celebration - Calvert City
- Light Up the Sky Fireworks Celebration - Moors Resort
- Summer Cruise In & Concert Series - Benton
- West Kentucky Disc Golf Tournament Trail - Mike Miller Park
- 400 Mile Yard Sale - HWY 68/80
- Labor Day Weekend Festivities - Kentucky Lake

Fall:

- CC River Folk Fest - Calvert City
- Aurora's Chainsaw Carving Competition - Kenlake State Park
- Boo Bash - Mike Miller Park
- The Dam Brewhaus' Annual Brewfest - The Dam Brewhaus
- Benton's Farm to Fork Dinner - Benton

Winter:

- Marshall County Hoopfest - Marshall Co. High School
- Light Up Calvert Christmas Festival - Calvert City
- A Benton Christmas - Benton
- Christmas in the Park Light Show - Mike Miller Park

For more details including specific dates, times, and locations, please visit us online at www.visitkylake.com/events.

Kentucky Lake's
BIG BEAR
RESORT

Celebrating
76
YEARS



76 YEARS OF BEAR FEET AND SUNSHINE.

TAKE YOUR FAMILY TO BIG BEAR RESORT
& LET NATURE TAKE ITS COURSE.

The rustic beauty of the untouched forests, trails and lakes are perfect for your next adventure together. Come create the perfect, peaceful retreat you know you all need.

Visit us online at bigbearkentuckylake.com
or call (800) 922-2327.

History At A Glance...

KENTUCKY DAM

Kentucky Dam is 22 miles upstream from the confluence of the Tennessee River with the Ohio. The dam is the longest in the TVA system, and the reservoir—which stretches for 184 miles across Kentucky and Tennessee—is the largest in the eastern U.S.

COST

**\$116.2
Million**

SIZE

**206 FT TALL
8,422 FT LONG**

BUILD

**START 1938
COMPLETE 1944**



- On **June 5, 1920**, Congress authorized the U.S. Army Corps of Engineers to conduct a 10-year survey of the Tennessee River Valley. It was to be the most comprehensive study ever made of any river basin in the United States.
- **1928**, the Corps reported two years early recommending a flood control, navigation and power dam at Aurora Landing in Marshall County, Ky.
- Aurora Dam clubs were organized in Calloway, Marshall and Graves counties to promote construction.
- **August 11, 1928**, Southern Utilities & Industries Inc. applied for a preliminary permit to study a dam site at Aurora Landing.
- **March 24, 1930**, Aurora Dam project was submitted to Congress.
- **May 28, 1931**, a temporary permit to build the dam was granted to Southern Utilities.
- **May 18, 1933**, Congress created the Tennessee Valley Authority.
- **1933** Aurora Dam Clubs morphed into the more organized Lower Tennessee Valley Association. Its single-minded goal was construction of a hydroelectric power dam on the lower Tennessee River.
- **August 16, 1933**, TVA opposed Southern Utilities' application for a license to build a dam.
- **August 17, 1933**, Southern's permit expired.
- The Federal Power Commission paid Southern several hundred thousand dollars for drilling, explorations and surveys to settle its claim against the government.
- **1935**, Congress authorized a nine-foot channel from Paducah to Knoxville, Tennessee.
- **March 1936**, TVA rejected Aurora Landing and other sites and recommended building the dam at Gilbertsville.
- **1937**, Congress appropriated money for more study; and a massive flood hit the Valley in January.
- **1938**, Congress appropriated \$2.613 million to start construction. It was the first time the word construction was used.
- **September 4, 1944**, electric power first produced at the dam.
- **October 10, 1945**, President Harry S. Truman dedicated Kentucky Dam and its lake before a crowd of 15,000 to 20,000.
- **November 1999**, U.S. Army Corps of Engineers broke ground for a new badly needed 1,200-foot lock at Kentucky Dam. Completion target 2008 at a cost of \$530 million, but Congress failed to appropriate sufficient funds, and the Inland Waterways Trust Fund share of funding was diverted to other projects. In 2020, completion target 2023 was extended to 2029 and the cost had increased from more than \$860 million to \$1.2 billion.

Reconnect with who and what you love at KY Lake!

KENTUCKY LAKE

Doesn't everyone love a good Comeback Story??

Here at Kentucky Lake, families have been coming back for generations! We hear an endless number of stories from people who remember coming here as children and now return with their own children and grandchildren even! The Kentucky Lake area honestly hasn't changed too much over the last several decades, people have gotten older, more homes have been built, but the lake shoreline is still just as natural and pristine as ever. You can still come here and expect home-cooked meals at a number of our locally owned restaurants. Try your hand at a round of putt putt or take a hike along many trails at our state resort parks or neighboring Land Between the Lakes National Recreation Area. Come discover how to disconnect from the chaos of life and reconnect with the ones who matter most which keeps them coming back for more year after year!

Another exciting comeback you can find at Kentucky Lake is the comeback of our fishery! It's been a roller coaster over the last five years as this top notch fishery faced more than its fair share of challenges, but we are back on the rise once again! The Kentucky Lake fishery is worth coming back to because of the sheer variety of species that can be caught here. Whether you enjoy fishing Crappie, Bluegill, Redear, blue and channel cats, and even the highly sought after trophy Bass, we have got it all! Tournaments are back on the rise and we are truly looking forward to the next chapter of fishing and angling on Kentucky Lake, the South's Great Lake!

TABLE OF CONTENTS

8	FISHING
12	HUNTING
14	TRAILS
16	CYCLING
18	BOATING
22	CAMPING
25	GOLF
26	ATTRACTIONS
30	SHOPPING
32	DINING
34	LODGING
40	TRAVEL INFO



FISHING



Kentucky Lake is home to a variety of fishing opportunities! Our early reputation was built on crappie fishing and lately, the crappie catches have been plentiful! Pan fryers are also bountiful with redear, bluegill, and yellow bass. If you are looking for exciting large catches, Kentucky Lake is the place to be for catfish: channel cats, flatheads, and blue catfish. Our bass fishery is on the rebound and offer an exciting challenge for anglers looking for trophy size bass.

GUIDES

Big Kahunas Fishing Guide Service

Gilbertsville, KY 42044
Don Schnuck • 270-559-1366
Chris Hicks • 270-331-3519
bigkahunafishingguideservice.com

Crappie-Gills-N-More

157 Chase Loop
Benton, KY 42025
270-703-7600
www.crappie-gills-n-more.com

Papa's Fishin For Fun

300 Whippoorwill Cove
Benton, KY 42025
815-761-7287
www.papasfishinforfun.com

Kick N Bass Guide Service

78 Michaels Way
Benton, KY 42025
Captain Rich Bay
kylakefish@gmail.com
270-205-7603
www.kicknbass.net

Brad Weakley

527 E. Unity Church Road
Hardin, KY 42048
270-354-9914
bweakley@vci.com
kentuckylake.com/weakley/

Hooked On Cats LLC Guide Service

Terry Rogers
270-210-4308
hookedoncatsllc@gmail.com
www.hookedoncats.net

Precision Fishing Guide Service

Jake Nalley
618-779-5145

Captain Kirk's Guide Service

11442 US Hwy 68 E
Benton, KY 42025
270-354-6017
captainkirksguideservice.com

Brandon Hunter Fishing

270-703-7777
brandonhunterfishing.com
info@brandonhunterfishing.com

Lucky Lady Guide Service

313 Hill Estates Ln
Benton, KY 42025
270-816-3102
Owner/Captain Eric Ashley

Rodney Hairgrove Guide Service

Big Bear Resort
Benton, KY 42025
270-362-0147
kylakefishingguide.com

Hook Em Up Guide Service

Matt Carter
270-994-3474
hookemupguide@gmail.com
hookemupguide.com

Loveless Outdoor Adventures

Damian Loveless
270-210-7843
lovelessoutdooradventures@gmail.com
lovelessoutdooradventures.com

Redden Outfitters of West Kentucky

Dennis Redden
270-252-5734
dennisredde@gmail.com

BAIT, TACKLE, & OUTDOOR SHOPS

Fast Eddie's Bait & Tackle

8492 US Hwy 68
Benton, KY 42025
270-354-6317
fasteddiesbaitandtackle.com

HiTec Outdoors

3243 US Hwy 68
Benton, KY 42025
270-527-1900
hitecoutdoors.com

Precision Sonar

Online Store
270-703-6133
precisionsonar.com

Kentucky Lake Outdoors

1071 US-68 E,
Benton, KY 42025
270-395-0420
kylakeoutdoors.com

Sportsman's Bait, Tackle, and Marine Repair

2305 US-62
Gilbertsville, KY 42044
270-362-4454
sweevytackle.com

Cornfield Fishing Gear

Online Store
217-304-1680
cornfieldfishinggear.com



For a complete listing of Fishing and Hunting license fees, permit fees and limits, contact the Kentucky Department of Fish & Wildlife at 502-564-4406 or visit their website at fw.ky.gov/



THE HOME OF
BASS FISHING

As the world's largest tournament-fishing organization, Major League Fishing consists of more than 30,000 competitors in all 50 states and 16 countries. MLF operates more than 250 tournaments each year across six circuits, including an entire division devoted to the South's Great Lake—Kentucky Lake.



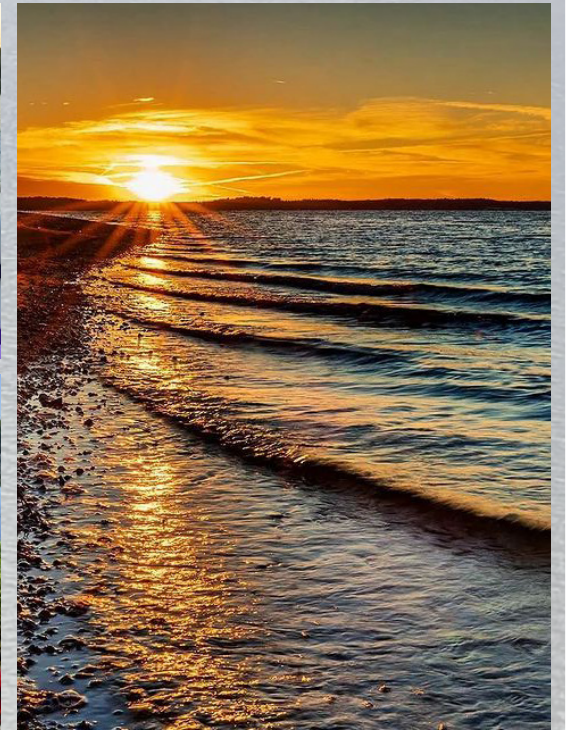
MLF
 MAJOR LEAGUE FISHING

30 GAMBLE LANE, BENTON, KY • 270.252.1000
 To learn more about MLF, or become a member, visit:
MajorLeagueFishing.com

FOLLOW US ON SOCIAL MEDIA



@visitkylake



**#kylake #kentuckylake
 #kentuckylakecomeback
 #thesouthsgreatlake**

HUNTING



Nature is abundant here in the Kentucky Lake region, and year after year we continue to pull sportsmen back in pursuits of game, large and small, furred and feathered.

With the over 170,000 acres of public land available in the U.S. Forest Service-managed Land Between the Lakes National Recreation Area (LBL) between Kentucky Lake & Lake Barkley, there are tremendous opportunities with elbowroom for quota gun hunts and freewheeling archery hunters as well as plenty of room to chase a spring turkey. In addition to the LBL, our region also has Clark's River National Wildlife Refuge, which offers thousands of acres for hunters to probe the bottomlands for boomer bucks or to chase those famous eastern gobblers.

Water-fowl is another driving force for region sportsmen at Kentucky Lake, and it can be a chilly season hotbed for waterfowl action. This big reservoir attracts a mixture of puddle ducks, some divers, and Canada geese.

For details on seasons and regulations, contact the Kentucky Department of Fish and Wildlife Resources, 1-800-858-1549 or see the Website www.fw.ky.gov. For the Land Between the Lakes, phone 270-924-2000 or visit www.lbl.org. For Clark's River NWR, phone 270-527-5750 or visit www.fws.gov/southeast/clarksriver/



PUBLIC LAND

	Deer	Turkey	Waterfowl	Other
Land Between The Lakes	★	★	★	★
Clarks River NWR	★	★	★	★
Ballard WMA	★	★	★	★
Kaler Bottoms WMA	★	★	★	★
Kentucky Lake WMA	★	★	★	★
West KY WMA	★	★	★	★



TRAILS



If hiking, biking or horseback riding is your idea of adventure, then the Kentucky Lake area will not disappoint. Several miles of trails, from paved to tight single-track offer the outdoor enthusiast an opportunity to spend time in nature, no matter what type of saddle you prefer, bike or horseback.

Eggner's Ferry Bridge Hike & Bike Trail

Approximately 1.5 miles long. Hike or bike across Kentucky Lake to the entrance of LBL! Park at the foot of the bridge and walk across.

Cherokee Trail at Kenlake State Resort Park

.07 mile trail of wooded terrain, hike with the Chickasaw trail for a greater distance.

Chickisaw Trail at Kenlake State Resort Park

1 mile trail through the woods along Kentucky Lake. For a longer distance, hike with the Chickasaw trail.

Kentucky Lake Dam Trail

2.8 mile out and back trail on Kentucky Lake. Great for walking or running and it's dog friendly!

Kentucky Dam Village Bo Beckett Memorial Trail

8.9 mile Loop for hiking and mountain biking.

Clarks River National Wildlife Refuge Loop Trail

2 mile loop that's dog and kid friendly. Features a pond, and spots for bird watching. Great for biking too!

Calvert City Memorial Park Walking Trails

Multi-use pedestrian trail connects residential areas to Old Park through Memorial Park.

North-South Trail (LBL)

59 mile trail spanning LBL and the terrain can be challenging. From rugged, hilly areas to more easy hiking, it a trail mans paradise and it is dog friendly!

Canal Loop Trail (LBL)

One of LBL's most popular trails, it's broken into sections offerings trails from 1.5 miles to 11 miles along the canal loop. Dog friendly!

Central Hardwoods Scenic Trail (LBL)

Designed to be a family friendly trail for biking and hiking with trailside rest areas. Total 15.8 mile out and back trail near Cadiz, KY. Dog friendly!

Coach Lester G Mimms Trail

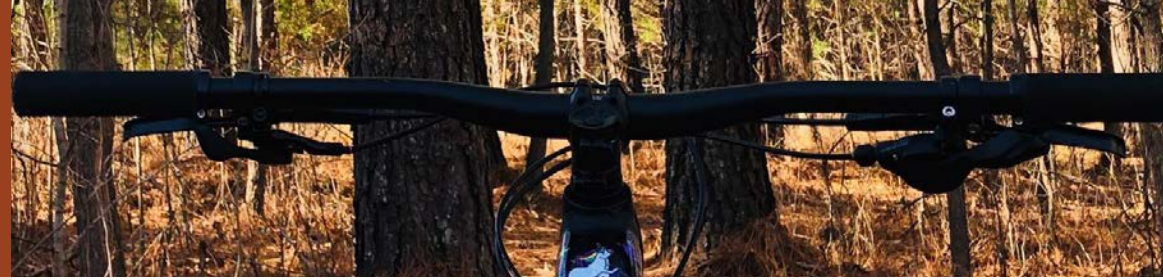
2 mile trail located in Cherokee Park at Kenlake State Resort Park.



ACCESS

	ATV	Hiking	Horseback	Mt. Biking
Canal Loop Trail 14.2 mi.		★		★
Ft. Henry Trail 29.3 mi.		★		
Hematite Lake Trail 2.2 mi.		★		
Honker Lake Trail 4.5 mi.		★		
(KDV) Bo Beckett Memorial Trail 8.9 mi.		★		★
Calvert City Greenway		★	★	★
Nature Station Trail		★		
North/South Trail 60 mi.		★		★
Turkey Bay OHVC 100 mi.	★			
Wranglers Riding Stables			★	
Central Hardwoods Scenic Trail 11 mi.		★		★
Lester G Mimms Trail 2 mi.		★		★

CYCLING

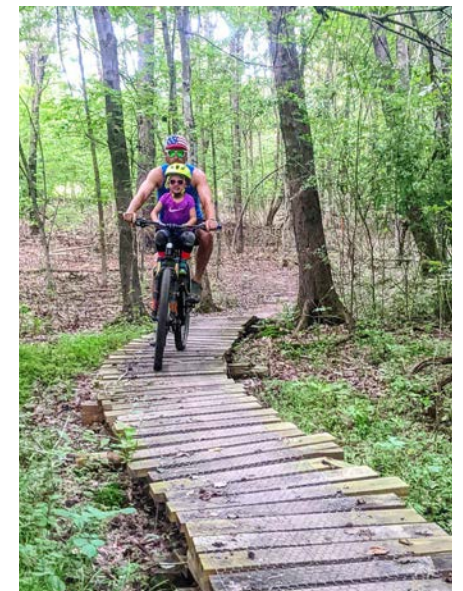


The Canal Loop Trail in LBL is perfect for mountain bikers. Featuring a 14.2-mile trail system that includes four connector trails which offer a variety of rides. The trail can be accessed from either the North Welcome Station Trail-head or the Kentucky Lake Drive Trail Access. The system provides options from 1.5 miles to 14.2 miles in distance and is popular because of the less strenuous terrain and scenic lake views. It has an easy to moderate rating and a 120-foot change in elevation.

The Northern Section of the North-South Trail in LBL, which is a 31-mile section, is open to mountain biking and connects the North Welcome Station with the Golden Pond Visitors Center. The point-to-point trail traverses ridge tops, bottom-lands and the shores of Kentucky Lake. Visitors can use this trail in conjunction with LBL's legal roads to make a series of shorter loops. Other opportunities include connecting to the Canal Loop Trail for a total of 45 miles. Continue southward and the **North-South Trail in LBL** leads on for a full 59-mile trail spans the entire length of the recreation area. Terrain ranges from rugged, hilly areas in the north to easier, less strenuous work in the south. You can access sections of this trail from points along a variety of Forest Service roads and facilities throughout Land Between The Lakes.

Central Hardwoods Scenic Trail is a new east-west trail connecting Kentucky Lake to Lake Barkley and generally parallels US 68. It is a family-friendly trail with smooth surfaces, gentle grades and is about 11 miles long. The eastern 2.5 mile portion is paved and offers great views of Lake Barkley. The 8.5-mile west portion is compacted stone. Most campgrounds in Land Between The Lakes have biking trails for those who are staying at the campgrounds. For more information about these campgrounds in LBL, visit our Land Between The Lakes Campgrounds section.

Kentucky Dam has a short biking trail across the dam with great views of the lake and river below with an extension into Calvert City.



BOATING

No boat, no problem!

Almost every resort and marina on Kentucky Lake offers boating rentals to suit your needs. You can rent just about anything from an 80-foot houseboat for a relaxing weekend getaway to a kayak to survey nature at its finest. We realize that boating can be a crucial part to enjoying your vacation here at Kentucky Lake and we have an abundance of options for you; come check it out! Of course if you have a boat, bring it on down. We have several public launch ramps available, making getting on the water a piece of cake.

RESORTS & MARINAS

Big Bear Resort

30 Big Bear Road
Benton, KY 42025
270-354-6414 • 800-922-BEAR
stay@bigbearkentuckylake.com
www.bigbearkentuckylake.com
Jon Boat, Fishing Boat, Paddle Boat,
Pontoon Boat, Kayaks, Boat Slips

Cozy Cove Waterfront Resort

1917 Reed Road
Benton, KY 42025
270-354-8168
ccwr.kylake@gmail.com
www.cozycovewaterfront.com
Fishing Boat, Paddle Boat,
Pontoon Boat, Kayak, Boat Slips

Hickory Hill Resort

90 Hickory Hill Lane
Benton, KY 42025
270-767-7217
www.hickoryhillresort.com
Guest Rental Only - Fishing Boat, Pontoon
Boat, Kayak, Jet Ski, Hydro-bikes Rowboats

Sportsman's Lodge

12710 US 68 East
Benton, KY 42025
270-354-8333 • 270-387-1245
www.sportsmans-lodge.com
Bass Boat, Pontoon Boat, Kayaks, Paddle
Boards, Slip Rentals

Lakeside Campground & Marina

12363 US 68 E
Benton, KY 42025
270-354-8157
lakesidecampground@gmail.com
visitlakesidecampground.com
kayak Rentals, Boat Slips

Kenlake Marina

888 Kenlake Marina Lane
Hardin, KY 42048
270-474-2245
marina@kenlakemarina.com
www.kenlakemarina.com
Fishing Boat, Pontoon Boat, Slide pontoons,
Slip Rentals

Hester's Resort & Marina

350 Hester Road
Benton, KY 42025
270-354-8280
hestersresort@gmail.com
www.hestersresort.com
Fishing Boat, Pontoon Boat, Kayaks,
Paddleboats, Boat Slips

King Creek Resort & Marina

972 King Creek Road
Benton, KY 42025
270-493-0076 • 270-354-8268
info@kingcreekresort.com
www.kingcreekresort.com
Fishing Boat, Pontoon Boat, Tritoon,
Pontoon w/ Slide

Kentucky Dam Marina

466 Marina Drive
Gilbertsville, KY 42044
270-362-8386 • 800-648-2628
kentuckydam@suntex.com
www.kydammarina.com
Bass Boat, Fishing Boat, Pontoon Boat,
Double deck pontoon, tritoon, Kayak, Paddle
Boards, Boat Slips

RESORTS & MARINAS CONT...

Malcolm Creek Resort

325 Guthrie Drive
Benton, KY 42025
270-354-6496
malcomcreek@yahoo.com
www.malcolmcreek.com
Fishing Boat, Paddle Boat, Pontoon Boat,
Kayak Rentals (Guest only), Slip Rentals

Moors Resort & Marina

570 Moors Road
Gilbertsville, KY 42044
270-362-8361 • 270-362-1410
marina@moorsresort.com
www.moorsresort.com
Tritoons, Pontoons, Fishing Pontoons,
John Boats, Jet Skis, Boat Slips

Whispering Oaks

267 Millers Road
Benton, KY 42025
270-354-6628
stay@whisperingoaks.com
www.whisperingoaks.com
Fishing Boat, Pontoon Boat, Kayaks, Canoes,
Boat Slips

Shawnee Bay Resort

1297 Shawnee Bay Road
Benton, KY 42025
270-354-8360 • 800-272-4413
info@shawneebayresort.com
www.shawneebayresort.com
Guest Rental Only - Bass, Fishing &
Pontoon Boat, Boat Slips

BOAT REPAIR

Donley's Marine

6123 US 68 East
Benton, KY 42025
270-354-6283
donleymarine@aol.com
www.donleymarine.com

HiTec Outdoors

3243 US Hwy 68
Benton, KY 42025
270-527-1900
hitecoutdoors.com

Jet-A-Marina

4616 US Hwy 62
Calvert City, KY 42029
270-395-4030
jetamarina.com

Sportsman's Bait, Tackle, & Marine Repair

2305 US 62
Gilbertsville, KY 42044
270-362-4454
sportsmanbait@gmail.com

BOAT LAUNCH

Big Bear Park

Big Bear Hwy • Benton
Courtesy dock, Double boat ramp

Buckhorn Park

Moors Camp Hwy • Benton
Courtesy dock, Double ramp
w/High water access

Lakeland Wesley Village Park

Benton
Single boat ramp (not paved)

Rocky Point Park

Little Bear Creek Rd • Benton
Single boat ramp

Haddock's Ferry Park

Hwy 1523 • Calvert City
Tennessee River Single ramp

Birmingham Point

Barge Island Rd • Benton
Double boat ramp

Jonathan Creek Boat Ramp

US Hwy 68 • Benton
Temporary courtesy dock,
Double boat ramp

Little Jonathan Creek

KY 80 - KY 402 E • Hardin
Single ramp & Courtesy Dock

Harry Lee Waterfield Park

US 68 • Aurora, KY
Boat ramp with picnic area

Sledd Creek - TVA

Ridge Road • Gilbertsville
Carry-down ramp only Boat
Rentals



"Big Jobs No Problem....The Impossible May Take A While"

Full Service Marine Facility



Repair • Service
Maintenance • Boating Store
Used Boats • Detailing
Water Sports • Insurance Claims
Winterizing • Summerizing
24 Hour Emergency Service Available
We Service Most Makes and Models

6123 US Hwy 68 E • Benton, KY 42025

www.donleymarine.com



TAKE A WALK ON THE WILDLIFE SIDE



Discover 170,000 acres of hiking, paddling, camping, wildlife viewing, biking, outdoor learning & more in Western Kentucky & Tennessee

PLAN YOUR NEXT ADVENTURE:
WWW.LANDBETWEENTHELAKES.US
800-525-7077

CAMPING



Who's up for some roasted hot dogs & S'mores?

For some vacationers, the idea of a perfect vacation is a fire, a camper, and fishing pole. Kentucky Lake can offer you just that! With over 15 local campgrounds and RV parks, we can offer you extravagant resort style camping to the simplest sites nestled deep in nature's home. Many of our campgrounds offer pull-through sites as well as seasonal and transient sites. A few are even open year round for whenever you hear nature calling.

TRANSIENT CAMPGROUNDS

Tanglewood Campground and RV Resort

55 KOA Lane
Aurora, KY 42048
270-474-2778
Mykayla Hecko
mhecko@outlook.com

Bee Spring Campground & RV Park

573 Bee Spring Road
Benton, KY 42025
270-354-6515
beespringlodge.com

Big Bear Resort

30 Big Bear Road
Benton, KY 42025
270-354-6414
bigbearkentuckylake.com

Birmingham Point RV Park

5295 Barge Island Road
Benton, KY 42025
270-354-8482
acsmith974@gmail.com

KOA Campground Kentucky Lake/I-24

4793 US 62
Calvert City, KY 42029
270-395-5841
Bruce Tschetter
brucetschetter@yahoo.com

Kenlake State Resort Park

542 Kenlake Road
Hardin, KY 42048
270-474-2211
kentuckystateparks.reserveamerica.com

KY Dam Village State Park

727 Gilbertsville Hwy
Gilbertsville, KY 42044
270-362-4271
kentuckystateparks.reserveamerica.com

King Creek Resort & Marina

972 King Creek Road
Benton, KY 42025
270-493-0076 • 270-354-8268
kingcreekresort.com

Triangle Fishing Club

211 Triangle Fishing Club Rd
Gilbertsville, KY 42044
270-362-4814
thetrianglefishingclub.com

CAMPGROUNDS CONT...

Lakeside Campground & Marina

12363 US 68 E
Benton, KY 42025
270-354-8157
visitlakesidecampground.com

Lakewood Camping Resort

368 Jonathan Point Road
Benton, KY 42025
270-354-9122
lakewoodresortcampground.com

Malcolm Creek Resort

325 Guthrie Drive
Benton, KY 42025
270-354-6496 • 800-733-6713
malcolmcreek.com

Moors Resort & Marina

570 Moors Road
Gilbertsville, KY 42044
270-362-8361 • 800-626-5472
moorsresort.com

KY Lake Resort

59 Ky Lake Resort Road
Gilbertsville, KY 42044
270-362-8652
kylakeresortandrmpark@gmail.com
kylakeresort.wixsite.com

Chill-N-Tyme RV Park

277 Sirls Rd
Benton Ky 42025
270-853-6279 • 270-853-1378

Stagecoach Station Campground

230 Easy Street
Benton, KY 42025
270-410-CAMP (2267)
info@stagecoachcampground.com
stagecoachcampground.com

Ridge Road RV Park

1867 Ridge Rd
Gilbertsville, KY 42044
270-493-2134
ridgeroadrvpark@gmail.com
ridgerdrvpark-llc.business.site

Whispering Oaks Resort

267 Millers Road
Benton, KY 42025
270-354-6628
whisperingoaks.com

RV/CAMPER DEALER

Camp-A-Rama

481 US Highway 68 W
Benton, KY 42025
270-527-1374
camparama.com
Camper rentals & full service dealer.



DISC GOLF

GOLF



For more information on our local disc golf courses, scan the QR code, or, visit the West Kentucky Disc Golf Trail website listed below.



<https://www.westernkentuckydiscgolftrail.com/>

COURSES

Benton Golf & Country Club

1830 Golf Course Road
Benton, KY 42025
270-527-9673
bentongolfandcountryclub.com
18 Holes Par: 72 Yardage: 6442

Calvert City Golf & Country Club

123 Country Club Lane
Calvert City, KY 42029
270-395-5831
calvertcitycountryclub.com
Adam Webb, PGA
18 Holes Par: 72 Yardage: 6405

Kentucky Dam Village State Resort Park

US 641 North
Gilbertsville, KY 42044
270-362-4271
18 Holes Par: 72 Yardage: 6704

Paxton Park Golf Course

841 Berger Road, Paducah, KY
270-444-9514

Silo's Country Club

11435 St. Route 286, Kevil, KY
270-488-2182

Arrowhead Golf Course

183 Chinnook Drive Cadiz, KY
800-261-6009

Deer Lakes Golf Course

140 Deer Lakes Ln. Salem, KY
270-988-4653

Drake Creek Golf Course

1 Torrey Pines Dr, Ledbetter, KY
270-898-4653

Lake Barkley State Resort Park

US 68 W. Cadiz, KY
270-924-1131

Mineral Mounds State Park

50 Finch Lane Eddyville, KY
800-295-1878

Miller Memorial Golf Course

2814 Pottertown Rd, Murray, KY
270-809-2238

Murray Country Club

College Farm Rd. Murray, KY
270-753-6113

Oaks Country Club

1701 Magnolia Murray, KY
270-753-6454



ATTRACTIONS

Bigger isn't always better, you know...

Get away from the crowded amusement parks and busy beaches, Kentucky Lake's local attractions create a fun-filled experience that will suit any type of vacationer. Experience racing around a go-kart track or taking a horseback riding adventure through LBL; enjoy a lovely date night with your sweetheart or take a break from the lake and hit a water park for some high-action water rides. Whether you're here with your family, your partner, or just friends, we have something you'll be sure to enjoy!



Discovery Park of America
830 Everett Blvd.
Union City, TN 38261
731-885-5455
discoveryparkofamerica.com

Forgotten Past
3390 US Hwy 68 E
Benton, KY 42025
270-527-9244
forgottenpast.com

**Land Between The Lakes
National Recreation Area**
238 Visitor Center Dr
Golden Pond, KY 42211
800-525-7077
landbetweenthe lakes.us

Kentucky Shores Family Fun Center
6215 US Hwy 641 N
Gilbertsville, KY 42044
270-362-4774
kyshoresfun.com

Venture River Water Park
280 Funway Dr
Eddyville, KY 42038
270-388-7999
ventureriver.com

Patti's 1880s Settlement
1793 J H O'Bryan Ave
Grand Rivers, KY 42045
(270) 362-8844
www.pattis1880s.com

AREA ATTRACTIONS

Kentucky Opry
88 Chilton lane
Benton, KY 42025
270-527-3869
www.kentuckyopry.com

Apple Valley Hillbilly Garden and Toyland
9351 US-68
Calvert City, KY 42029
270-366-2301
applevalleyhillbillygardenandtoyland.com

Badgett Playhouse
1838 J H O'Bryan Ave
Grand Rivers, KY 42045
888-362-4223
badgettplayhouse.com

Cherokee Park
542 Kenlake Rd
Hardin, KY 42048
270-474-2211

Calvert City Memorial Park
1077 5th Ave SE
Calvert City, KY 42029
270-395-7138
calvertcityky.gov

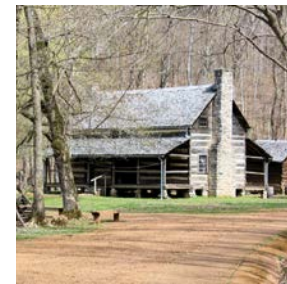
HH Lovett Park
HWY 641
Benton, KY 42025
cityofbenton.org/parks/

Kentucky Dam Visitors Center
640 Kentucky Dam Rd
Grand Rivers, KY 42045
270-362-4318
tva.com

Maggie's Jungle Golf
7301 US Hwy 641
Gilbertsville, KY 42044
270-362-8933
maggiesjungle.golf

Mike Miller County Park
598 US Hwy 68 W
Benton, KY 42025
270-527-5284
marshallcountyparks.org

Clarks River EERA
Highway 408
East from the city of Benton, KY
270-527-5770



Kentucky State Parks



Kentucky Dam Village State Resort Park

Calvert City/270-362-4271

- Lodge & Cottages
- Harbor Lights Restaurant
- Convention Center
- 18-Hole Golf Course
- Walk/Bike Path to Calvert City
- Marina/Rentals
- Campground
- Beach
- Airport
- Mt. Biking Trail



Kenlake State Resort Park

Hardin/270-474-2211

- 48-Room Lodge
- Marina/Rentals
- Hiking Trails
- 34 Cottages
- Campground
- Meeting Space
- Aurora Landing Restaurant
- Lakeside Amphitheater
- Indoor/Outdoor Tennis



Mineral Mound State Park Eddyville/ 270-388-3673

- 18-Hole Golf Course
- Pro Shop
- Boat Launch
- Fishing Pier
- Courtesy Dock
- Picnic Area

PARKS.KY.GOV



TEAM
KENTUCKY.
KENTUCKY STATE PARKS

SHOPPING

Whether you're looking for something to do on a rainy day on the lake, or just want to find a unique piece to take home, Kentucky Lake offers a variety of shopping experiences.

Specialty shops are all around the area, and antiques are in abundance. Trendy fashions for adults, and adorable clothes for the kids in your life can be found at several specialty shops, as well as unique home decor. If antiques are what you're after, be sure to explore our antique stores to find that one of a kind item, or a new addition to your collection. Whatever you are looking for, you'll be sure to find something you'll love here at Kentucky Lake! During any vacation, shopping seems to be on the top of someone's list. At Kentucky Lake, we have a variety of local antique shops, gift shops and boutiques.

AURORA

The Aurora area nestled in the southern part of Marshall County and the middle of Kentucky Lake is home to the Hitching Post & Old Country Store! One of the best places to stop and shop for gifts, souvenirs, clothing, and more! Not to mention that they have a huge selection of classic soda pops with almost any flavor you could imagine!

BENTON

Kentucky Lake's downtown features a court square with great shops including a couple of clothing stores, gift shop and home decor galore, a bookstore, jewelry store, comic book shop, wine tasting bar, and nearby park! This little square boasts several events throughout the year, including seasonal cruise ins and concert series for family night out on the town!

CALVERT CITY

Kentucky Lake's community on the water is the perfect family friendly destination with events happening all year long at quaint Memorial Park in the center of town. While it may not offer much in the way of gift shops, it's the perfect stop to shop for groceries and supplies during your vacation on the water's edge!

DRAFFENVILLE

The gateway to Kentucky Lake. This area nestled right on HWY 68/80 provides direct access to all roads that lead to the water. Scattered throughout you'll find a couple of shops perfect gifts, coffee, and lunch with friends and family!

CALVERT CITY

COFFEE & CHOCOLATE FEST
March 2 & 3

KITES OVER CALVERT
May 4

AMERIBRATION
July 4

CC RIVER FOLK FEST
October 4 & 5

LIGHT UP CALVERT CITY
December 7

calvertcityky.gov



TEXT "EVENTS"
TO (270) 301-8138



DINING

End the dinnertime arguments and hangry lunch moments. You will find something for everyone on this list!

The KY Lake region is home to some of the best barbecue there is. Only in Western Kentucky will you find barbecue made this way (and it's the best way of course!). Whether you're looking for some quick sustenance, a mid-afternoon snack or a full course meal, we have what you need! After a fun, but long day out on the lake who wants to go home and cook. At Kentucky Lake, we have dining that is sure to tickle anyone's fancy from world famous catfish and award-winning BBQ to good ole southern home-style cooking.



BREWERIES



DRIVE-INS



SIT DOWNS & MUCH MORE

FOR A COMPLETE LIST OF PLACES TO EAT,
SCAN THIS QR CODE:



THIRSTY FAVORITES

The Dam Brewhaus

1894 US 641 North
Benton, KY 42025
dambrewhaus.com
270-252-9302

A microbrewery featuring frequent live music, craft beers, and food

Buckhorn Creek Vineyard & Winery

5957 Moors Camp Hwy
Gilbertsville, KY 42044
270-703-5841
Variety of red & white wines

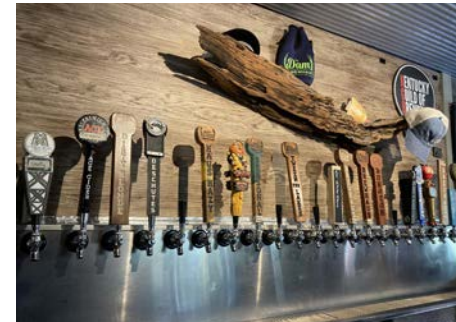
Rose & Oak Tasting Room

1201 Poplar St
Benton, KY 42025
270-252-3313
Wine and bourbon tastings in downtown Benton

Poca Terra Winery

633 Gatlin Road
Benton, KY 42025
pocatterawinery.com
270-493-2682

Specializing in estate-bottled and grown dry, semi-sweet, port style, & sweet wines



**FROM OWENSBORO
TO PADUCAH, WE
INVITE YOU TO THE
WEST KENTUCKY
BREWERY HOP TRAIL**

HAVE A TASTE OF KENTUCKY

9 CITIES • 13 BREWERIES

FOR MORE INFORMATION ON THE WEST
KENTUCKY BREWERY HOP:



LODGING

For over 70 years, Kentucky Lake has offered visitors great lodging, dining and recreation.

Relax at any one of our resorts, motels, bed and breakfasts, campgrounds and condominiums, or dive into recreation with volleyball, jet skiing, boating, tennis, golf, fishing and hunting.

Kentucky Lake prides itself in offering diverse accommodations for everyone. Our lodging includes lakefront cabins and cottages, motels and hotels (most with swimming pools and only a short drive from the lake), primitive and full hook-up campgrounds and unique floating houseboat vacations. Our resorts and motels are strategically located throughout the beautiful lake area with access to major highways. At Kentucky Lake, you'll have no trouble finding just the right home away from home. On the next few pages, you will see a variety of lodging establishments available to you at Kentucky Lake. You can receive additional lodging information by visiting our website: visitkylake.com

LAKEFRONT RESORTS

Big Bear Resort

30 Big Bear Road
Benton, KY 42025
270-354-6414 • 800-922-BEAR
www.bigbearkentuckylake.com
Lake Front, Motel, Cottages, Condo, Camping, Boat Slip, Dock, Boat Rental, Pool, Beach, Pets Allowed in Campground Only, Marine service & repair mechanic on duty. Handicap Accessible

Cozy Cove Waterfront Resort

1917 Reed Road
Benton, KY 42025
270-354-8168
www.cozycovewaterfront.com
Lake Front, Cottages, Dock, Boat Rental, Beach, Pet Friendly, Boat Slips, 1 Cottage is Handicap Accessible

Hester's Resort & Marina

350 Hester Road
Benton, KY 42025
270-354-8280
www.hestersresort.com
Lake Front, Cottages, Dock, Boat Rental, Beach, Pets Allowed

Hickory Hill Resort

90 Hickory Hill Lane
Benton, KY 42025
270-354-8207
www.hickoryhillresort.com
Lake front resort with swimming pool, dock, Wifi, guest laundry facilities, boat ramp, fish cleaning house, boat rentals for guests, kayaks, paddleboards, hydrobikes, game room, games available and campfire pit.

Kenlake State Resort Park

542 Kenlake Road
Hardin, KY 42048
270-474-2211 • 800-325-0143
www.parks.ky.gov
Lake Front, Motel, Cottages, Camping, Boat Slip, Dock, Boat Rental, Pool, Restaurant, Meeting Rooms, indoor tennis center, Handicap Accessible

Kentucky Dam Village State Resort Park

166 Upper Village Drive
Gilbertsville, KY 42044
270-362-4271 • 800-325-0146
www.parks.ky.gov
Lake Front, Motel, Cottages, Camping, Marina, Pool, Beach, Restaurant, Golf Course, Meeting Rooms Convention Center, Golf Packages, Handicap Accessible

King Creek Resort & Marina

972 King Creek Road Benton, KY 42025
270-493-0076 • 270-354-8268
www.kingcreekresort.com
Lake Front, Cottages, Camping, Boat Slip, Dock, Boat Rental, Beach, Pets Allowed

Malcolm Creek Resort

325 Guthrie Drive
Benton, KY 42025
270-354-6496 • 800-733-6713
www.malcolm creek.com
Lake Front, Cottages, Camping, Boat Slip, Dock, Boat Rental, Pool, Beach, Wifi, Pets Allowed, Handicap Accessible

Moors Resort & Marina

570 Moors Road
Gilbertsville, KY 42044
270-362-8361 • 800-626-5472
www.moorsresort.com
Lake Front, Log Cabin Lodge, Cottages, Camping, Boat Slip, Dock, Boat Rental, Pool, Beach, Mini Golf, Restaurant, Meeting Room, Pets Allowed, Handicap Accessible

Shawnee Bay Resort

1297 Shawnee Bay Road Benton, KY 42025
270-354-8360 • 800-272-4413
www.shawneebayresort.com
Lake Front, Cottages, Dock, Boat Rental, Beach, Fishing Packages, 1 unit is Handicap Accessible

Triangle Fishing Club

211 Triangle Fishing Club Rd.
Gilbertsville, KY 42044
270-362-4814
thetrianglefishingclub@gmail.com
www.thetrianglefishingclub.com
Lake Front, Cottages, Camping, Boat Slip, Dock, Beach

Whispering Oaks

267 Millers Road
Benton, KY 42025
270-354-6628
www.whisperingoaks.com
Lake Front, Cottages, Dock, Boat Rental, Playground, Beach, RV Sites, Kayak Rentals, Wifi, Pets Allowed

Sportsman's Lodge Campground & Marina

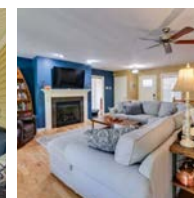
12710 US 68 East
Benton, KY 42025
270-387-1244
www.sportsmans-lodge.com
Lake Front, Motel, Cabins, Pool, Boat Slip, Dock, Boat Rental, Wifi, Pets Allowed In Certain Units



Create lasting memories with us...

Lakin' Memories

at Kentucky Lake



A magnificent four bedroom, two-bath home on KY Lake with a private covered dock. Enjoy the tranquility of the secluded cove near moors marina. Our recently built home offers all amenities for up to 12 people!

Lakinmemories.com

484 Knottingham
Gilbertsville, KY 42044
VRBO #720725

HOTELS/MOTELS

Benton Inn
806 Main Street
Benton, KY 42025
270-527-1341
www.bentoninn.com
Motel, Boat Hookups, Wifi, Flat Screen TVs, Pets Allowed

Days Inn
75 Campbell Drive
Calvert City, KY 42029
270-395-7162
www.daysinn.com/hotel/18455
shrimadllc@gmail.com
Pool, WiFi, Guest Laundry, Breakfast, Dogs Allowed (2 Maximum, 40# or less, \$15 fee/pet/night). Fishermen's Rate Available.

Early American Motel
16749 US 68 East
Aurora, KY 42048
270-474-2000
www.earlyamericanmotel.com
Motel, Cottages, Pool, Wifi, RV Sites (2), Small Pets Allowed

Quality Inn & Suites
173 Carroll Rd.
Benton, KY 42025
270-527-5300
qualityinn42025@gmail.com
Indoor Pool, Free Wifi, HCP Accessible. Guest Laundry Facilities, Meeting Room (up to 30 people), Free Hot Breakfast, Non-Smoking, Pets Allowed w/Fee, Truck Parking And Boat Hook Ups. 2 Floors, No Elevator.

Quality Inn Calvert City - Paducah East
86 Campbell Dr
Calvert City, KY 42029
270-395-5566 • 833-766-5106
qualityinncalvertcity@mediacombb.net
choicehotels.com
Motel, Pool, Hot and Healthy Breakfast, Meeting Space (24 people), Small Pets Allowed w/Fee, Handicap Accessible, Battery outlet receptacles outside.

Fin N Feather Lodge
16695 US 68 East
Aurora, KY 42048
270-474-2351 • 800-486-3961
www.finnfeatherlodge.com
Motel, Cabins, Wifi, Pavilion w/Fireplace, 11 RV Sites w/ full hook ups Small Pets Allowed

Ken Bar Lodge
7711 US Hwy 641
Gilbertsville, KY 42044
270-362-4990
www.kenbarlodge.com
Motel & Lounge

Kentucky Dam Motel
4020 US 62
Calvert City, KY 42029
270-395-5633
sitaram1946@hotmail.com

Kentucky Lake Inn
2237 US 62
Gilbertsville, KY 42044
270-362-6094
inquiries@wingfieldinn Gilbertsvilleky.com
www.wingfieldinn Gilbertsvilleky.com
Motel, Free WiFi, Free Breakfast, Pet Friendly

The Lakehouse Inn at Sledd Creek
7428 US HWY 641 N
Gilbertsville, KY 42044
270-362-4254
info@lakehouseinn.com
lakehouseinn.com
Spacious rooms, cabins, handicap accessibility, smart TVs, WIFI, resort style pool with pool house, picnic pavilion area, family game area; camping options and more coming in fall 2024.

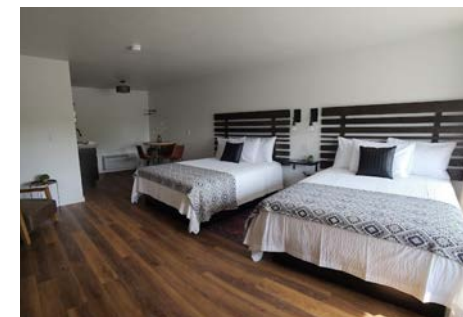


INLAND RESORTS

KY Lake Resort
59 KY Lake Resort Road
Gilbertsville, KY 42044
270-362-8652
kylakeresort.wix.com/resortandrmpark
Motel, Cottages, Camping, Pets Allowed, Handicap Accessible

Lakeland Resort
16410 US 68
Hardin, KY 42048
270-474-2292
www.lakelandresortky.net
Motel, Cottages, Wifi, Pool, Playground, Microwaves, Karaoke Nights, Movie Nights and games available. Pets \$10.

Aurora's KY Lake Cottages
16918 US 68 East
Aurora, KY 42048
270-474-8000
www.kylakecottages.com
Motel, Cottages, Pool, Pets Allowed, Handicap Accessible



Malcolm Creek RESORT
Kentucky Lake

Off the main waters of Kentucky Lake, our resort is the perfect location for the whole family and the fisherman!

Camping • Cottages • Marina Store • Boat Slips • Pontoon and Fishing Boat Rentals

START PLANNING YOUR VACATION TODAY!



325 Guthrie Dr. Benton, KY 42045
800-733-6713 • 270-354-6496

SHORT TERM PRIVATE RENTALS

VRBO



For our area's short term private listings, scan these QR codes!

EVOLVE



270-354-8360

800-272-4413



Shawnee Bay Resort

1297 Shawnee Bay Road · Benton, KY 42025

Write or Call for Reservations & Color Brochure



Shawnee Bay Resort
Welcome to Kentucky Lake.

Family Vacations, Fishing Trips or Getaways

ShawneeBayResort.com

Our Waterfront Accommodations Range From One Bedroom Cottages With Screened Porches To A Five Bedroom, Luxurious Lindal Cedar Home Lodge.



Clean Sandy Beach • Patios • Floating Sundeck • Electric & Gas Dock • Covered Slips • Boat & Motor Rentals • Pontoon Fishing Boats • Fish Cleaning Area • Basketball • Volleyball
Much More! • Sorry, No Pets

TRAVEL INFO

TRANSPORTATION & ROAD SYSTEMS

Accessible by:

Interstates 24 & 69, US Hwys 62, 68 & 641,
Western KY Parkway,
KY Hwys 80 & 402

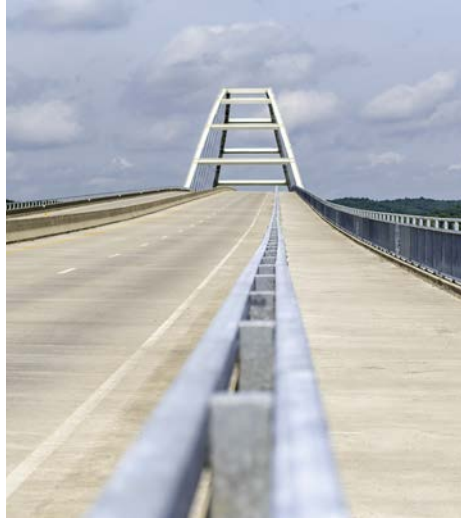
Greyhound Bus-Paducah, KY
Amtrak Train Line-Fulton, KY

Air:*

Nearest Small Craft Airport-
**Kentucky Dam Village
State Resort Park Airport**
Gilbertsville, KY 270-362-4271

Barkley Regional Airport
2901 Fisher Rd.
West Paducah, KY 42086
270-744-0521

Nashville International Airport
1 Terminal Dr.
Nashville, TN 37214
(615) 275-1675



REAL ESTATE

Century 21 Service Realty, Inc.

3004 US 641 N
Benton, KY 42025
270-410-2121
www.century21servicerealty.com
Andrea Higdon, Principal Broker/Owner, Resi-
dential, Commercial, Auction

High Ridge Resort and Development

40 Ridge Loop Benton, KY 42025
270-354-8989
Affordable large wooded privacy lots for your
dream home. Also, established residences and
investment opportunities.

Re/Max Real Estate Associates

803 Main St.
Benton, KY 42025
270-527-8035
Fax 270-527-3147
www.kentuckylakerealty.com
real-estate-associates-benton-ky.remax.com
Jeff Smith, Principal Broker/Owner

Tree Tops Condominiums

Big Bear Resort
30 Big Bear Resort Road
Benton, KY 42025
270-354-6414 or 800-922-2327
www.bigbearkentuckylake.com
Treetops Condominiums, developed by Rick
Meier, and located at Big Bear Resort on
Kentucky Lake. Private resort condominium
living with championship golf and other
nearby attractions. Contact Big Bear Re-
sort's office for details on units still available
on the market.

MEETING & EVENT CENTERS

Are you looking for a large enough space to host your conference or fundraising event? Perhaps you need meeting space for your fishing tournament mandatory pre-tournament meeting or to host a meal and awards ceremony after! Maybe you need a lakeside wedding venue!

The Kentucky Lake CVB works with several other community partners to find a meeting space to suit your size and needs! Contact the CVB today at 270-527-3128 to begin your search for large indoor spaces for your next event!



FINANCIALS

Community Financial Services Bank - CFSB
Benton-Calvert City-Draffenville-Mayfield-
Murray-Paducah
Member FDIC
270-527-6034
cfsbky.com

Lobby Hours:
Mon - Fri: 8:00am - 6:00pm
Saturday: 9:00am - 1:00pm
Drive Through Hours
Mon - Fri: 8:00am - 6:00pm
Saturday: 9:00am - 1:00pm

**YOUR
ADVENTURE
AWAITS**

with West
Kentucky's
Community
Bank!

CFSB
COMMUNITY FINANCIAL SERVICES BANK
Member FDIC

yourlifeyourbank.com

SCAN THIS
QR CODE
TO VIEW
ALL OF OUR
LOCATIONS



Creativity is found here.



Moments are caught here.



Relaxation thrives here.



Souls are fed here.



Luck happens here.



Culture lives here.



www.kentuckywesternwaterlands.com



7428 US Highway 641 N
Gilbertsville, KY 42044

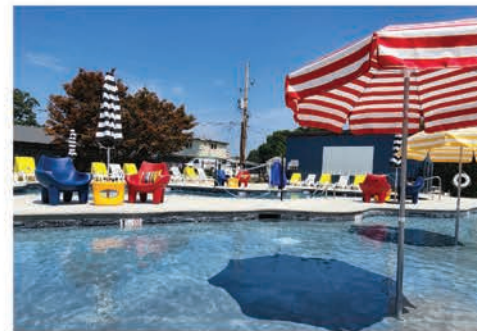
P: (270) 362-4254

E: info@lakehouseinn.com



www.lakehouseinn.com

If you're looking to recreate memories of summer camps and family road trips – this nostalgic inn is for you. Our outdoor space is unlike any other at Kentucky Lake – with cozy fire pits, family games and a two resort style pools. We're a stone's throw away from so many of the Lake's most popular places to eat, shop, play – and launch a boat, of course!



"Gorgeously designed rooms, spectacular pool and amenities, super great location, amazing staff and owners! It gets better every time we go!"

ROOMS • CABINS • CAMPERS • RESORT POOLS • GAME ROOM
OUTDOOR SCREEN W/PROJECTOR • FIRE PIT • POOL HOUSE

KENTUCKY LAKE, KY

KENTUCKY AFTER DARK

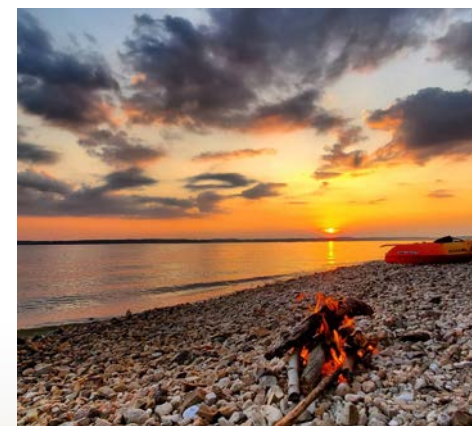
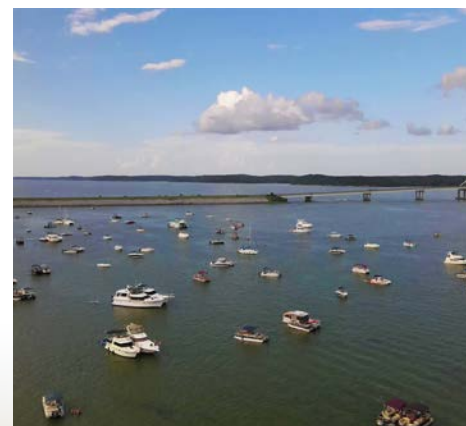
Discover Kentucky's Unknown,
Visit Kentucky After Dark

KENTUCKY TOURISM PRESENTS A COMMONWEALTH OF KENTUCKY PRODUCTION KENTUCKY AFTER DARK

STARRING KELLY LITTLE GREEN MEN | THE BATTLETOWN WITCH FESTIVAL | HAUNTED SEED MILL TRIGG TERROR HAUNTED HOUSE |
OCTAGON HALL | HAUNTINGS AT WHITE HALL STATE HISTORIC SITE | WAVERLY HILLS SANATORIUM |
WOOLDRIDGE MONUMENTS IN THE MAPLEWOOD CEMETERY FEATURING THE ANDERSON HOTEL |
DOGMAN IN LAND BETWEEN THE LAKES | THE GHOSTS AND GOBLINS OF DEAD MAN'S HOLLOW |
GHOSTS OF OLDHAM COUNTY | HAUNTINGS AT THE ELM

PLAN YOUR TRIP
KentuckyAfterDark.com

TEAM
KENTUCKY



**A Kentucky Lake resort experience
designed with *your* family in mind.**

**An affordable, family-friendly resort experience that includes
lodging, dining, complimentary activities and a full-service marina.**

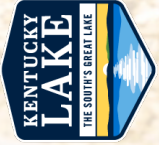
Book your experience today!

the Moors
RESORT & MARINA

570 Moors Road
Gilbertsville, KY 42044
270.362.8361

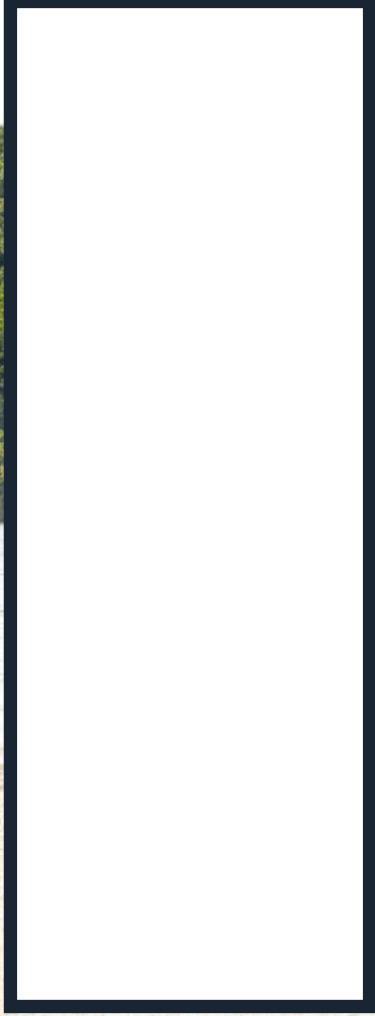
  
moorsresort.com





**CONVENTION &
VISITORS BUREAU**
93 Carroll Rd. • Benton, KY 42025
www.visitkylake.com
800-467-7145

PRSR STD
US POSTAGE
PAID
DATAMARK



Paid in part by the Kentucky Dept. of Tourism.

TEAM
KENTUCKY.

